



3.2 DRVO, VRSTE DRVA I ALATI ZA OBRADU

Ključni pojmovi, novi stručni nazivi i novi sadržaji

Za bolje razumijevanje teme

Drvo  **svojstva**  **alati za obradi**

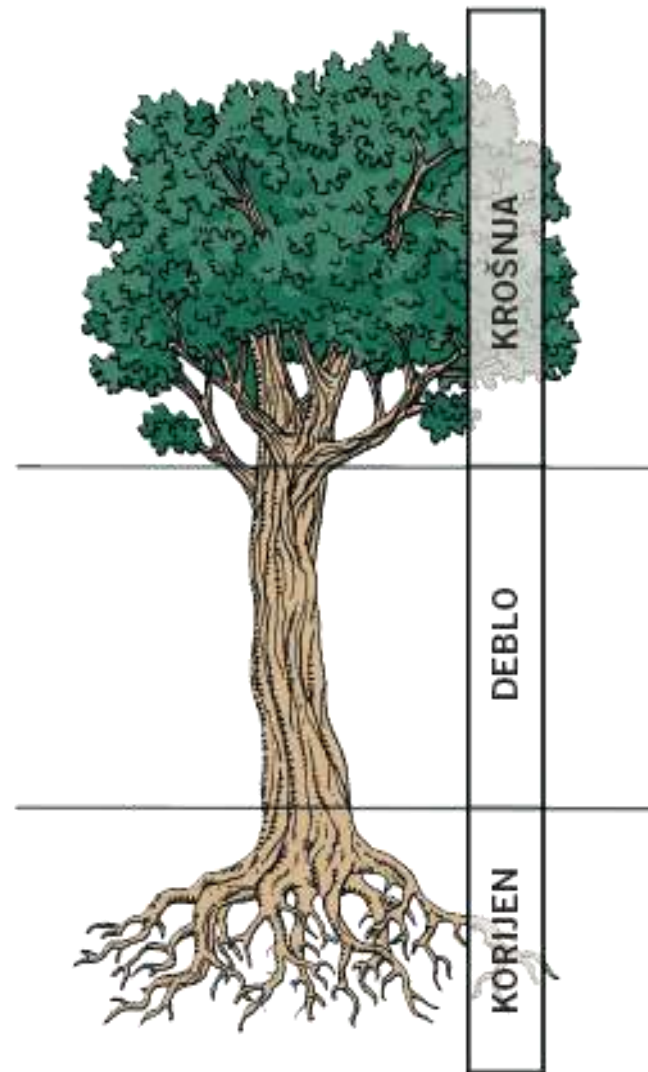
proizvodi od drva



zanimanja

Drvo je biljka.

Raste pojedinačno ili u skupinama koje nazivamo **šume.**



Vrste drva

Crnogorica

Bjelogorica

o hrast

o bukva

o jasen

o grab

o jela, smreka, bor



Meko drvo

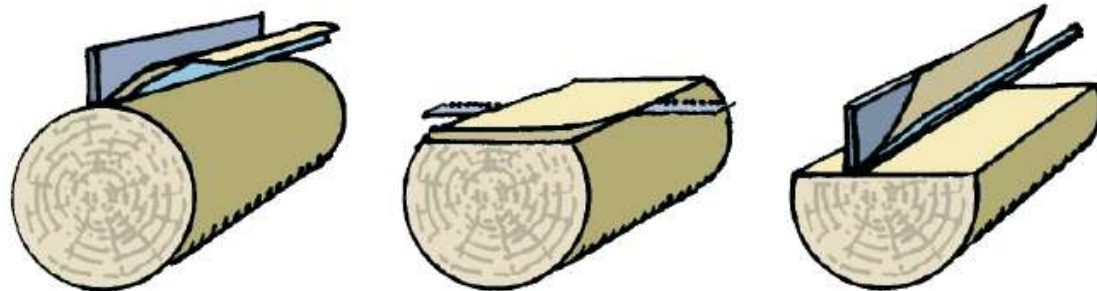
- o lipa
- o smreka
- o topola
- o jela
- o ariš

Tvrdo drvo

- o hrast
- o bukva
- o orah
- o jasen
- o krab
- o klen

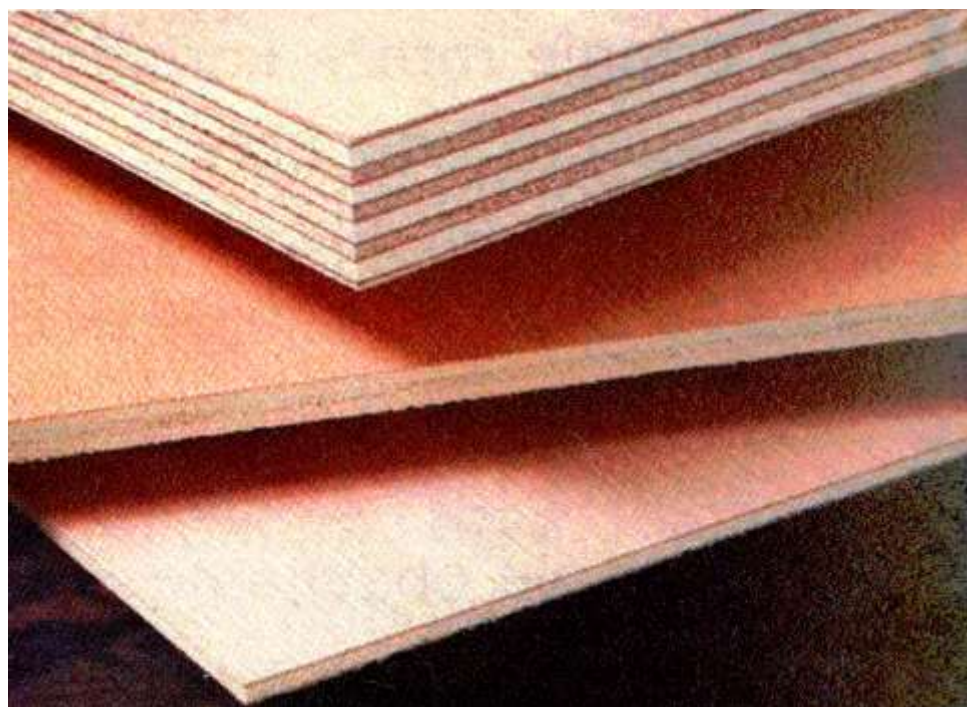
Tehničko drvo je drvo koje se podvrgava preradi ručnim alatima ili strojevima.

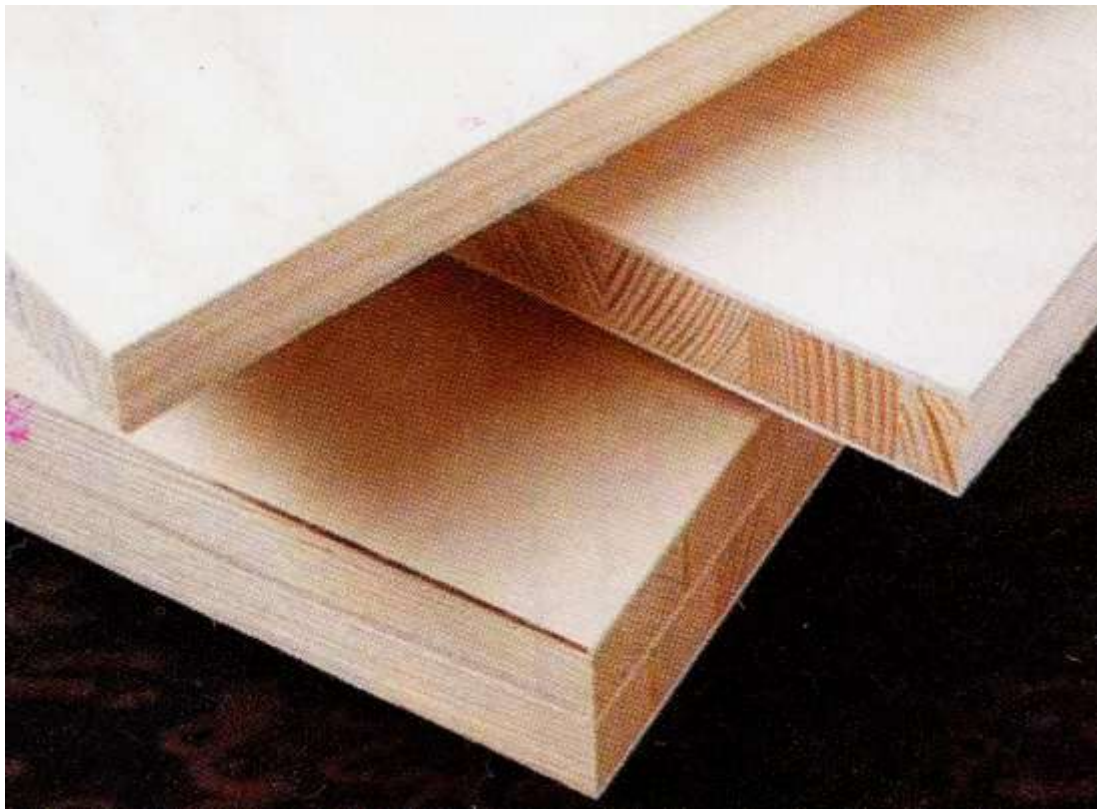
Furnir



Furnir 

Šperploče





Panel ploče



Iverica



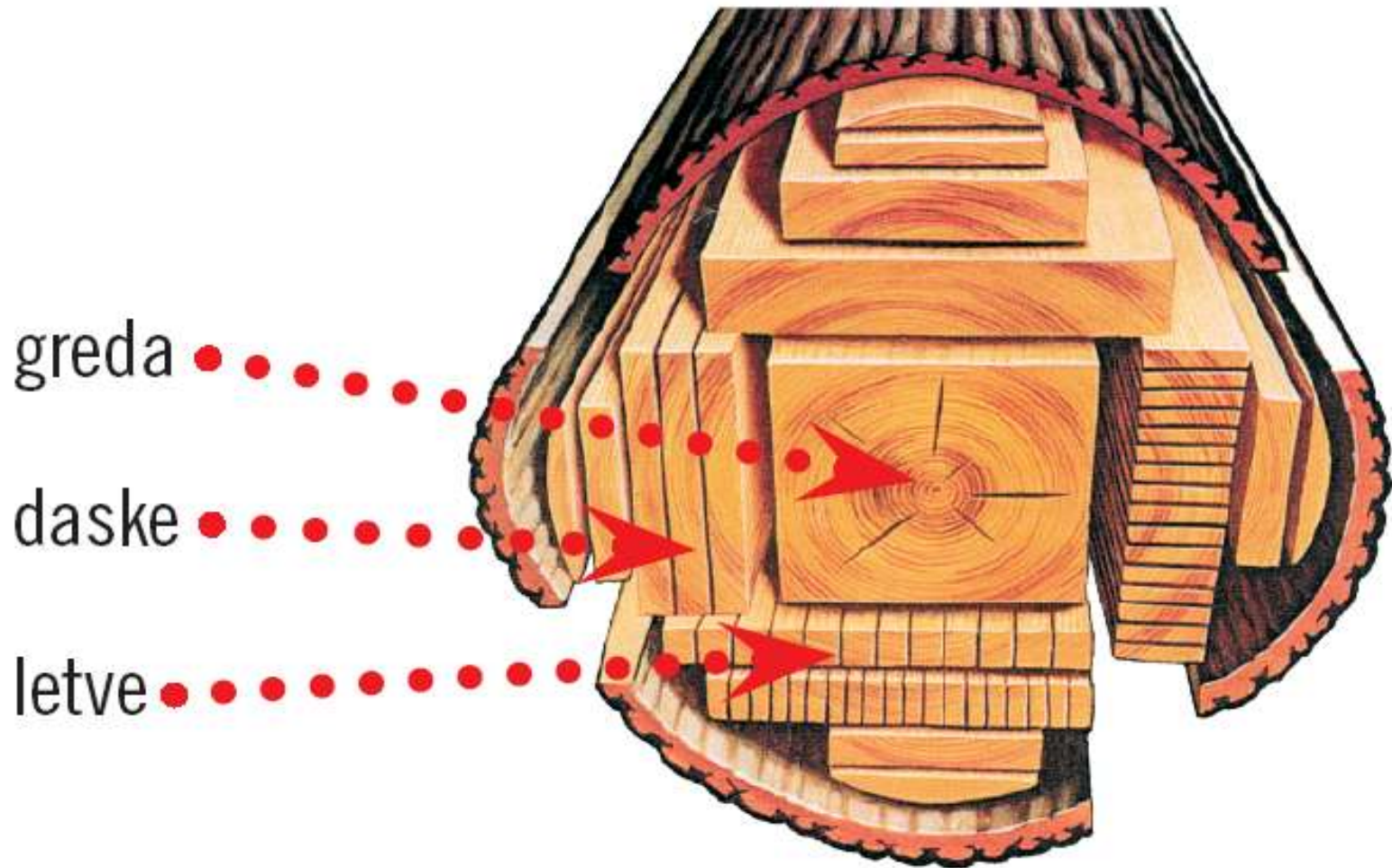
**Plastificirana
iverica**



lesonit

Pilane





greda

daske

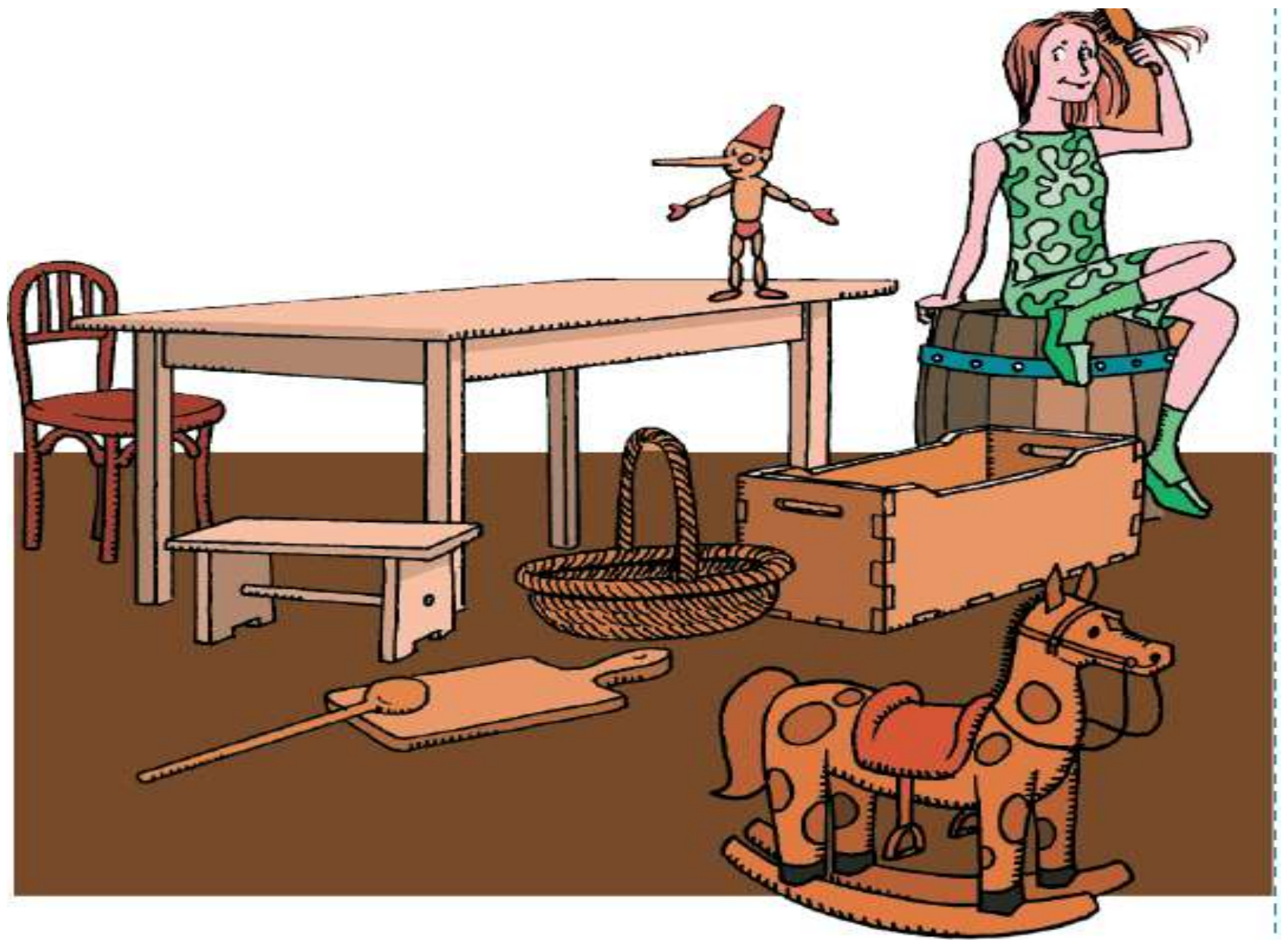
letve



Presjek debla



« Proizvod od drva –
stepenice





Svojstva drva

Drvo se može koristiti kao graditeljski materijal, materijal za namještaj, stolariju (prozori i vrata) i za proizvodnju papira i kartona.

Njegova primjena ovisi o svojstvima koja imaju razne vrste drva.

To su **tehnička svojstva** koja mogu biti **estetska, fizikalna i mehanička.**

Estetska svojstva

- boja,
- tekstura-šare,
- sjaj
- finoća, miris



namještaj

A close-up photograph of oak wood grain, showing a warm, reddish-brown color with a subtle, wavy pattern of growth rings.

hrast

A close-up photograph of beech wood grain, characterized by a fine, uniform texture and a light, yellowish-brown color.

bukva

A close-up photograph of linden wood grain, showing a very fine and even texture with a pale, pinkish-tan hue.

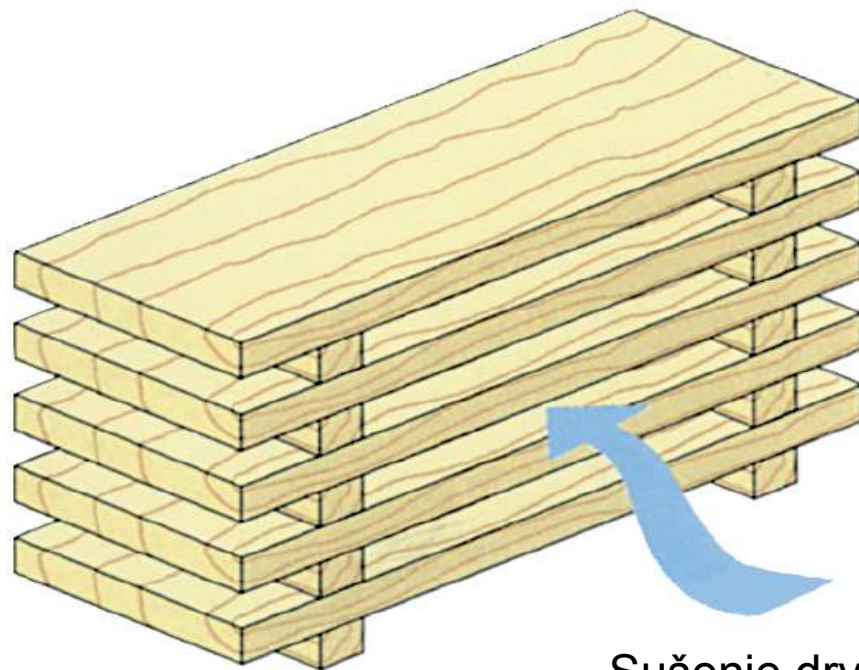
lipa

A close-up photograph of pine wood grain, featuring a prominent, dark, wavy pattern of growth rings and a warm, reddish-brown color.

bor

Fizikalna svojstva

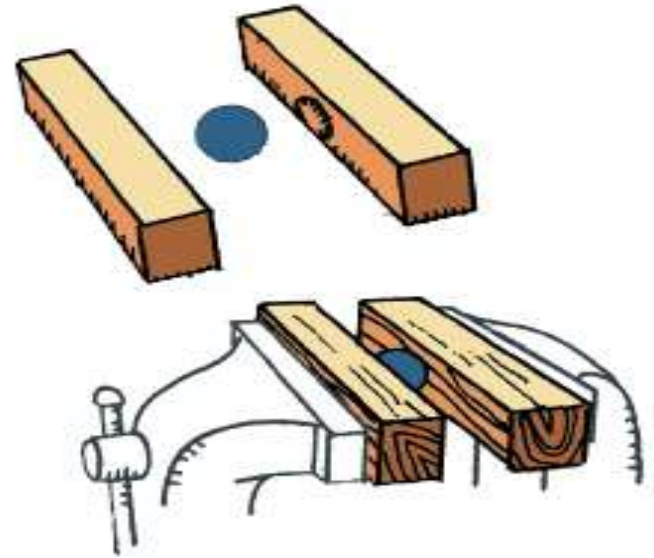
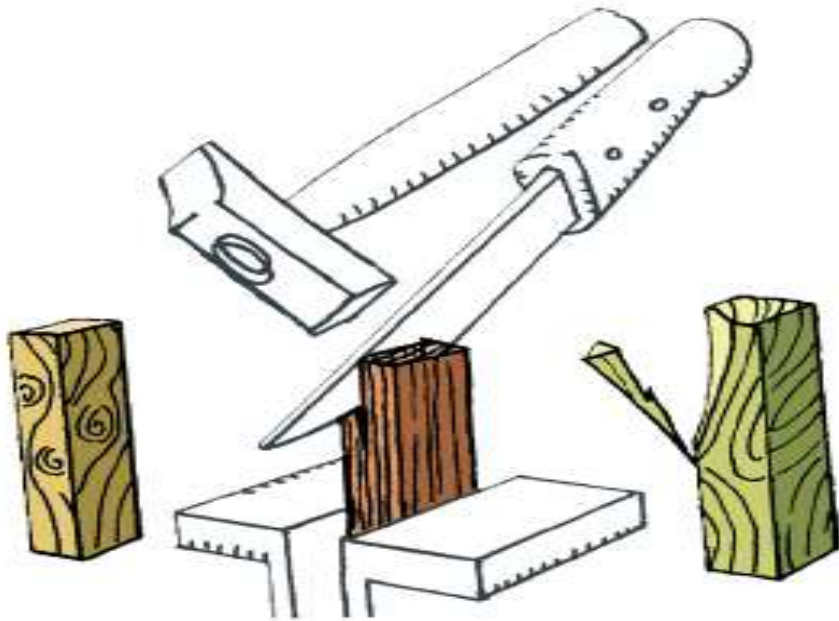
- upijanje vlage
- masa
- provodljivost zvuka
- gustoća
- provodljivost topline



Sušenje drva

Mehanička svojstva

- tvrdoća
- čvrstoća
- elastičnost
- cjepljivost
- otpornost na trošenje

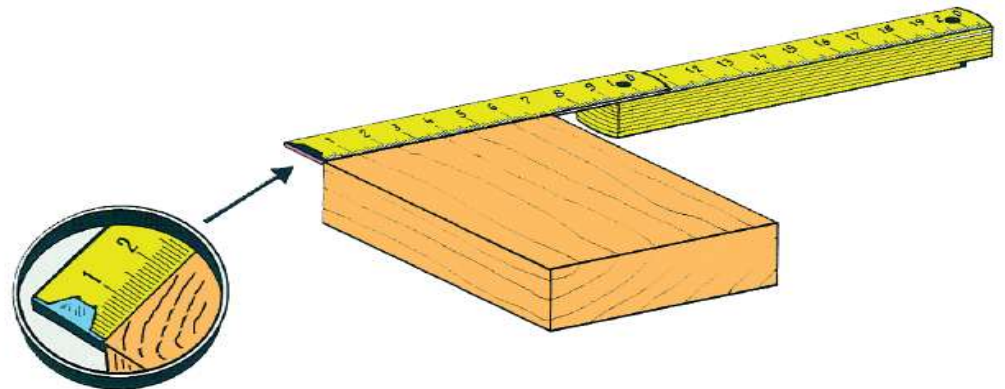


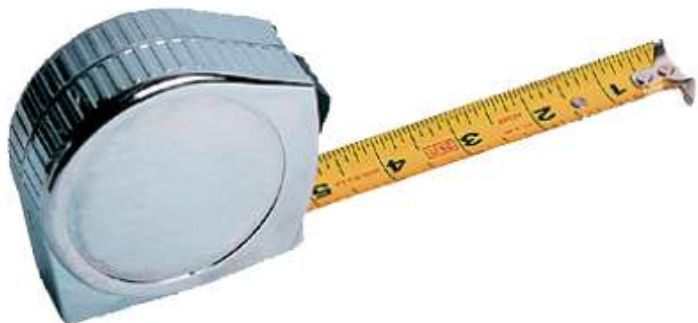
Ispitivanje cjepljivosti

Ispitivanje cjepljivosti

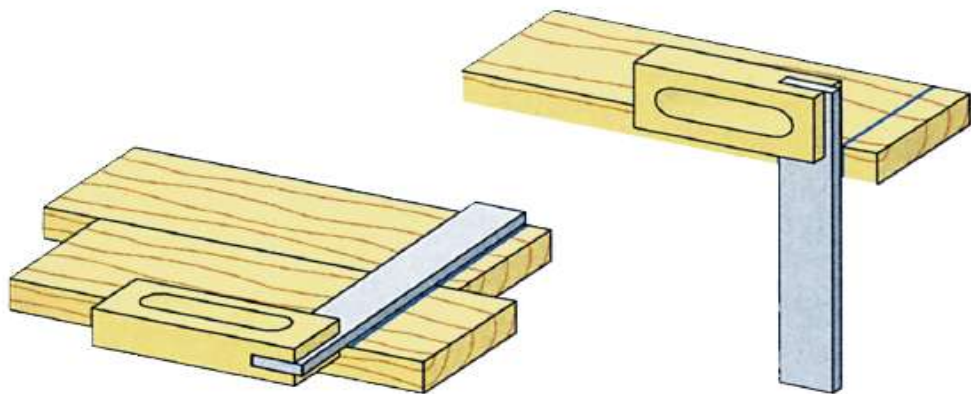
Pribor za mjereje i obilježavanje kod obrade drva

Stolarski metar

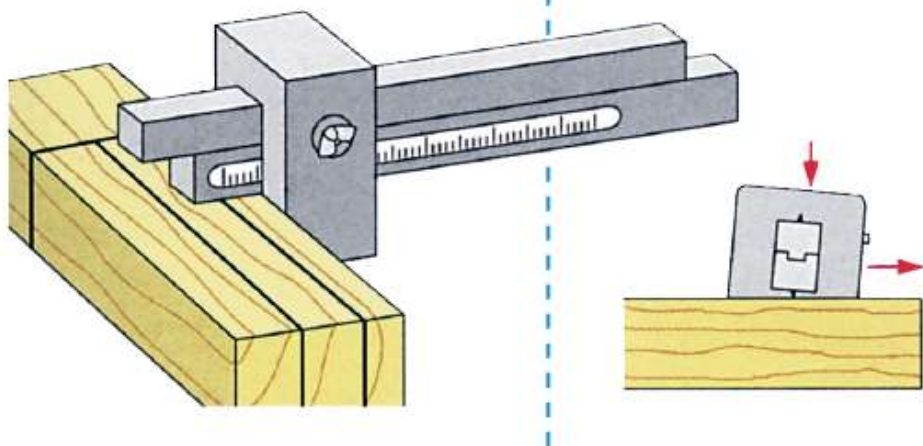




Mjerna vrpca



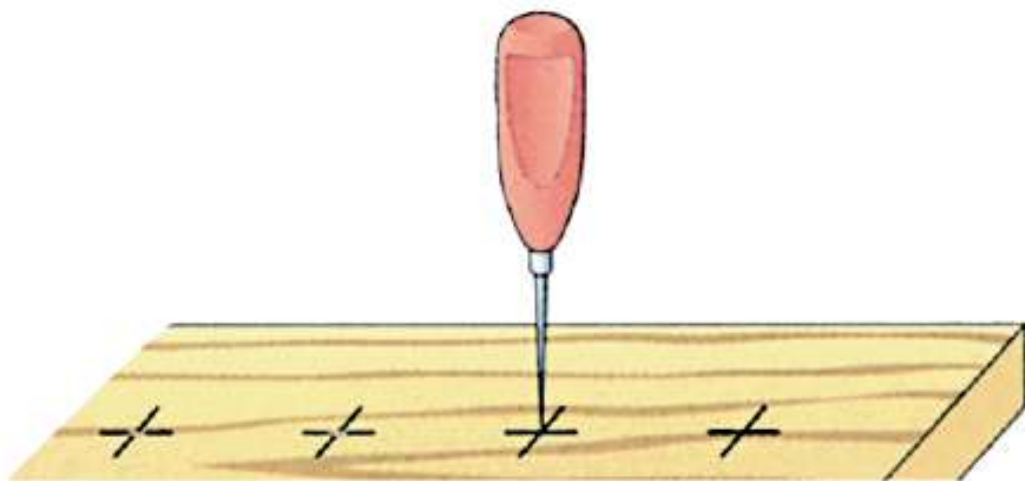
kutnik



crtalo



Mjerenje i
obilježavanje



šilo

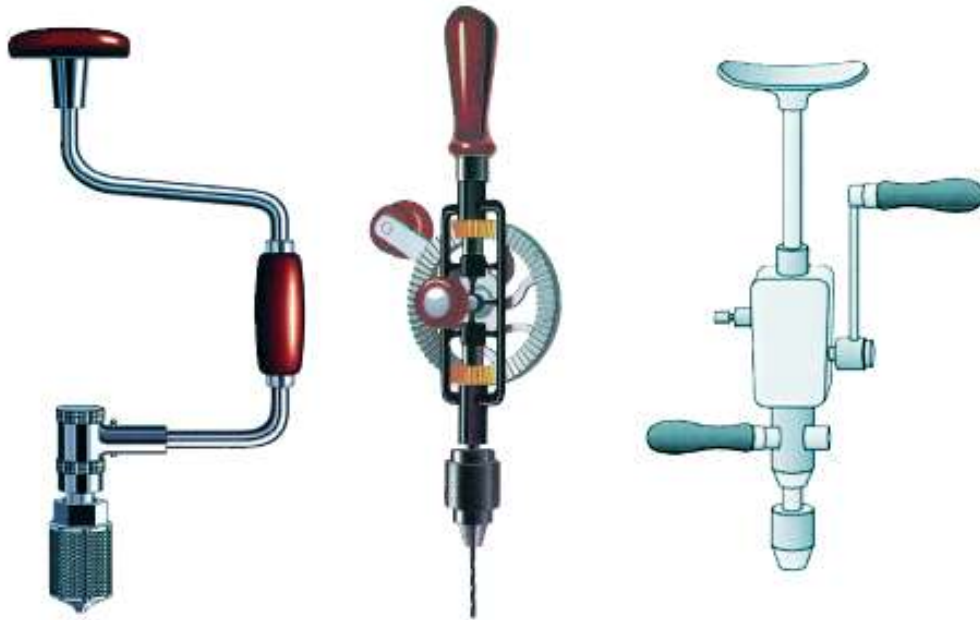
Ručni alati za obradu drva



sjekira



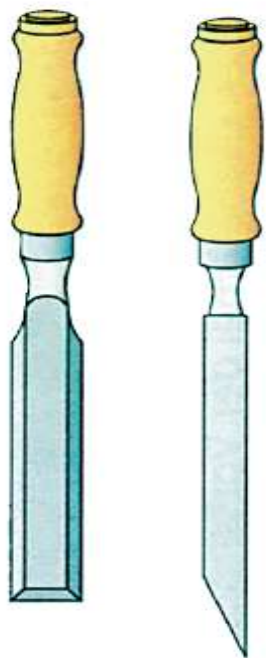
Razne pile



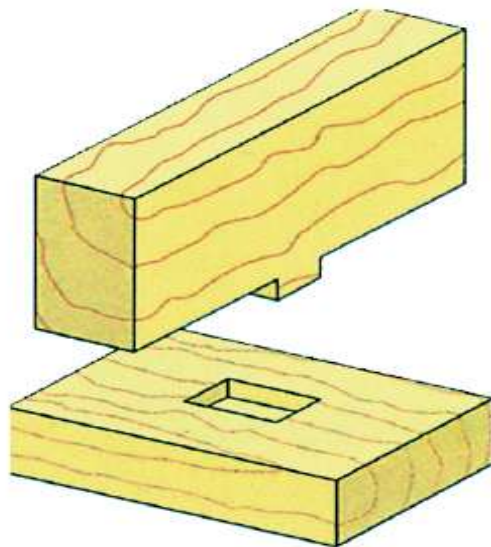
Ručne bušilice i svrdla



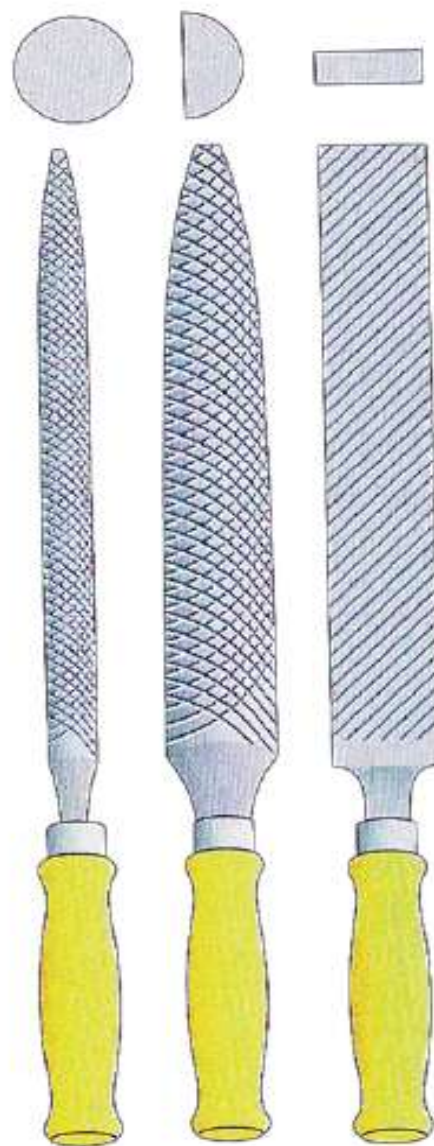
blanje



Dlijeta



rašpe



Precizni nožić



Rezbarski luk



Olovka



Pilice



Ključ za krilaste matice



Mjerna letvica



Kutnik



Rezbarska daščica





DRVO, VRSTE DRVA I ALATI ZA OBRADU

3.2

1. Bukva, grab, hrast i vrba ubrajaju se u skupinu crnogoričnih drva.

DA

NE

2. U estetska svojstva drva ubrajaju se tvrdoća, čvrstoća i elastičnost.

DA

NE

3. Ručni alati za obradu drva su ravnalo, trokut, šestar i metar.

DA

NE

4. Koji se pribor ne koristi za mjerenje i crtanje na drvu:

a) stolarski metar

b) rašpa

c) ravnalo

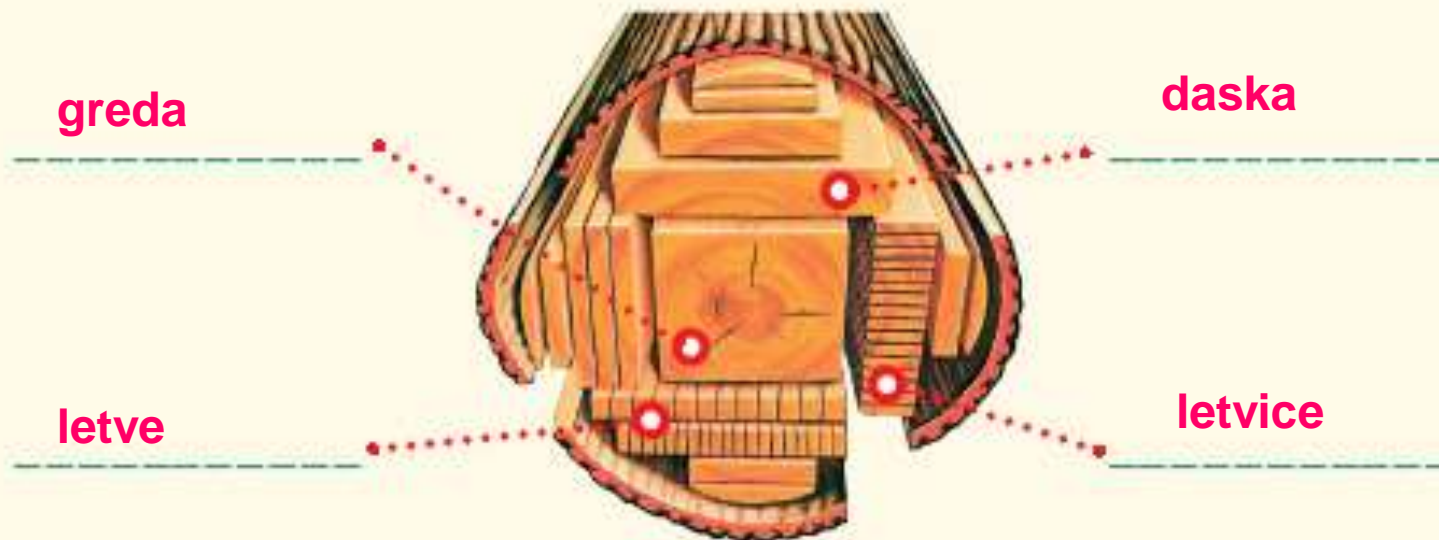
d) šilo



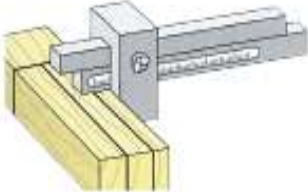


5. Najiskoristiviji dio drva kao tehničkog materijala je deblo.

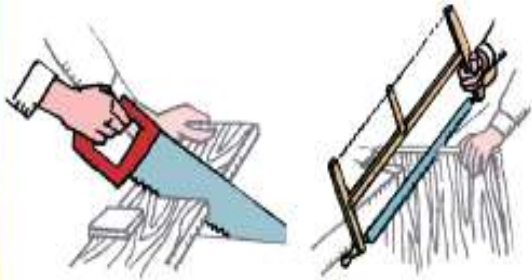
6. Drvo kao materijal posjeduje estetska, mehanička i fizikalna svojstva.

7. Obilježavanje pravih kutova na drvu (daskama) obavljamo uz pomoć kutnika.

8. Na slici se nalazi presjek debla. Na crtama ispišite nazive proizvoda koji nastaju obradom drva u pilani.



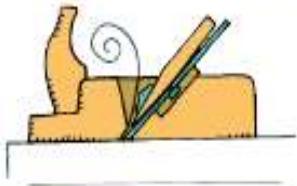
Crtež pribora ili alata	Nazivi pribora ili alata	Namjena pribora ili alata
	metar	
	kutnik	
	crtalo	
	šilo	
	sjekira	



Pila listarica
Pila jarmenica



bušilica



blanja



dljeto

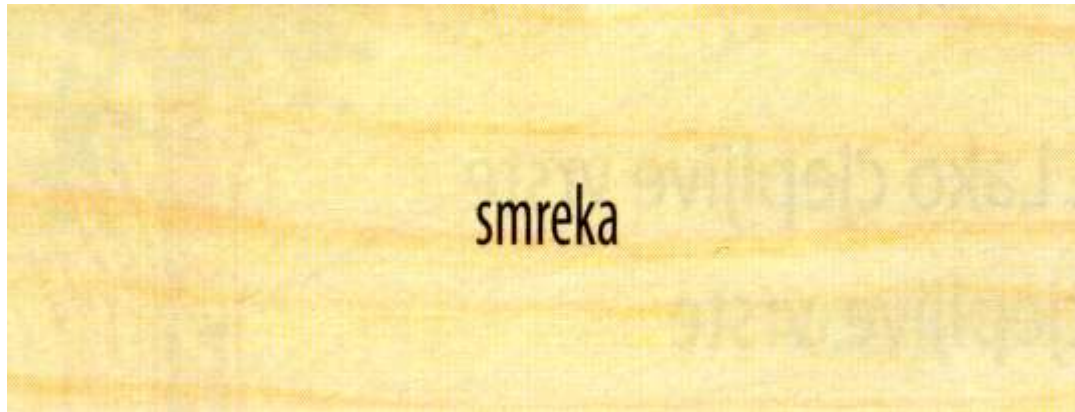


rašpa



jela

jela



smreka

smreka



bor

bor



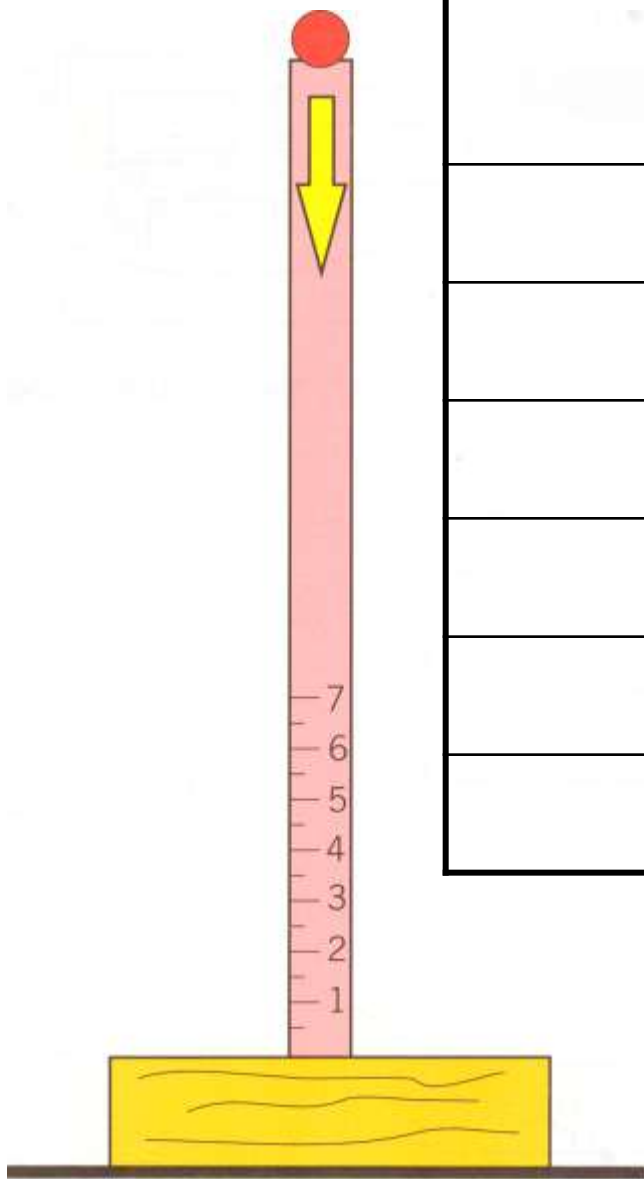
balza



hrast

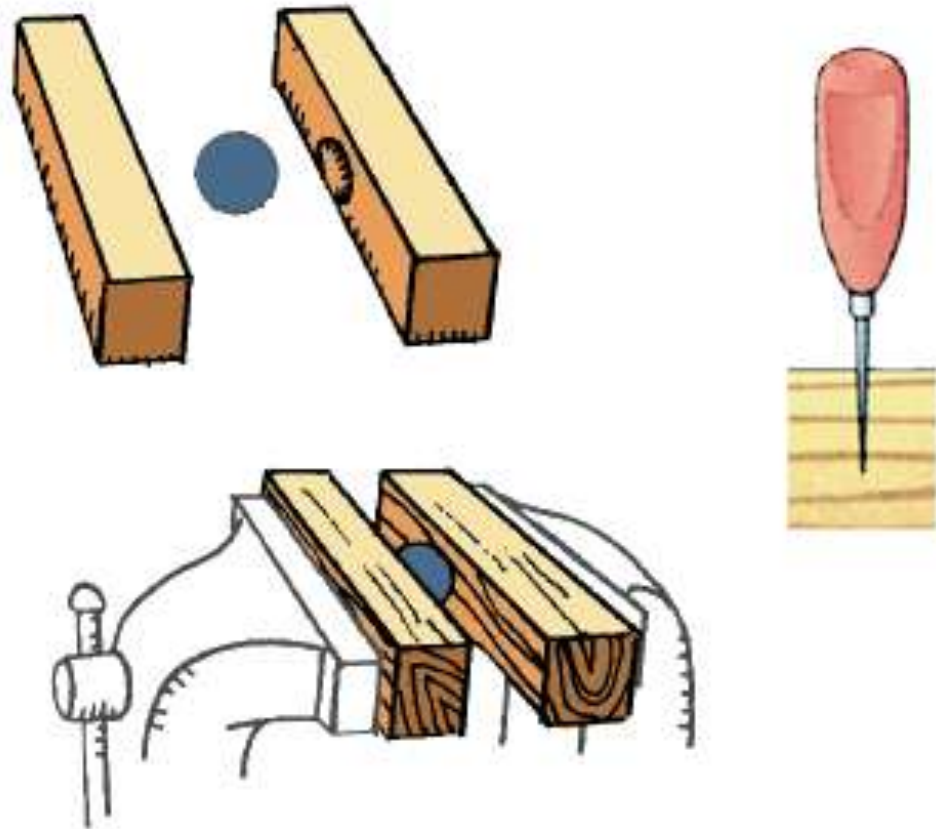


orah



Vrste drva	Odskok kuglice (cm)	Poredak po tvrdoći	
		1	
		2	
		3	
		4	
		5	
		6	

Ispitivanje tvrdoće drva pomoću odskoka kuglice



Poredak po tvrdoći

1	
2	
3	
4	
5	
6	

Ispitivanje tvrdoće drva rezanjem, šilom, čavlom ili kuglicom